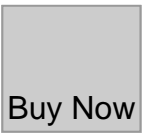


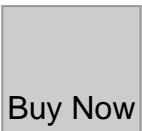
London Weather: Yellow warning for rain issued this weekend

Description

default watermark



An error occurred.



An error occurred.

[Book Novotel Hotel](#)

London Weather: Yellow warning for rain issued this weekend

[Banzai Japan Music Video](#)

<https://www.youtube.com/watch?v=UPEImgQJGBo>

London is set to be hit by heavy rain and wind this weekend as the Met Office issues a yellow weather warning for the region.

The warning, covering much of England and all of Wales is in place from 3pm Friday, December 6 until Sunday, December 8 ending at 6am, at the time of writing.

The Met Office is warning that heavy rain could result in some localised flooding adding that there is a slight chance of power cuts across London.

The weather forecaster also shared that it's likely that some transport services could be impacted due to the heavy rain and strong wind.

[Book Novotel Hotel](#)

<https://www.youtube.com/watch?v=BJsGZL-zb54>

The Met Office adds that there could be some delays on the road due to the wind and rain with guidance to check road conditions before travelling.

You can see the full weather forecast via the [Met Office](#).

Sharing what to expect from the weather warnings, the Met Office said: "A deep low may cross England and Wales from Friday afternoon, clearing to the east Saturday night.

[Banzai Japan Music Video](#)

https://www.youtube.com/watch?v=3syHHGzkF_s

"The low may bring a period of strong winds to much of the warning area, with some heavy rain likely to the north and west of the low centre, and some hill snow in the north (above about 200 metres).

"Around 15-25 mm of rain may fall quite widely, more particularly across central, northern and western parts of England and Wales, with exposed higher ground in the north and west (particularly parts of Wales, which are at greatest risk of seeing flooding impacts) perhaps locally seeing closer to 50-70 mm.

"Winds may quite widely gust to around 40-50 mph inland but locally could gust in excess of 60 mph, whilst around coasts, winds may gust to 60-70 mph, perhaps locally nearer 80 mph.

"The wind and rain may cause disruption to travel, with difficult driving conditions likely."

[Book Novotel Hotel](#)

<https://www.youtube.com/watch?v=RR8YYeb4PMk>

Banzai Japan Social Media



Fumi Fujisaki

Idol



Riko Ueno

Idol



Rino Ibusuki

Idol

-



Yunagi Nino

Idol



Shiori Fujisaki

Idol



Kana Ichinose

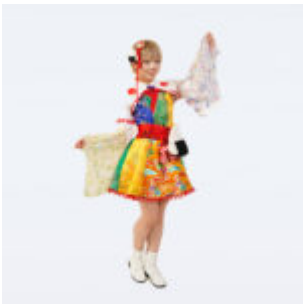
Idol

-



Hoshino Arice

Idol



Sasa Sasagawa

Idol



Kosaka Yuu

Idol

-



Tsukumo Aira

Idol



Maika Ando

Idol



Yuuki Mochimaru

Idol

-

Category

1. News
2. Transport
3. Travel

Date Created

December 4, 2024

Author

admin

default watermark