

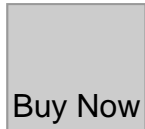


TFL confirms charges for Blackwall and Silvertown Tunnel

Description



An error occurred.



An error occurred.

[Book Novotel Hotel](#)

[TFL confirms charges for Blackwall and Silvertown Tunnel](#)

[Banzai Japan Music Video](#)

<https://www.youtube.com/watch?v=UPEImgQJGBo>

## TFL confirms charges for Blackwall and Silvertown Tunnel

At a meeting yesterday (December 4), the government agency's board agreed on the charges, which will affect Kent motorists travelling in and out of the capital.

If paying via TfL AutoPay, it will cost £2.50 for motorcycles and mopeds, £4 for cars and small vans, £6.50 for large vans and £10 for HGVs during peak times – weekdays between 6am and 10am Londonbound and between 4pm and 7pm coastbound.

[Book Novotel Hotel](#)

<https://www.youtube.com/watch?v=BJsGZL-zb54>

Users will be charged £1.50 for motorcycles, mopeds, cars and small vans, £2.50 for large vans and £5 for HGVs during off-peak times if using AutoPay.

However, if paying by any other means, drivers will be charged the peak rates regardless of the time of day.

Failure to pay the fee will result in a penalty charge notice (PCN) worth £180, reduced to £90 if paid within a fortnight.

The number of PCNs for each vehicle will be limited to one per day.

[Banzai Japan Music Video](#)

[https://www.youtube.com/watch?v=3syHHGzkF\\_s](https://www.youtube.com/watch?v=3syHHGzkF_s)

Certain cross-river bus and Docklands Light Railway (DLR) journeys will also be free of charge for at least a year and discounts will apply to some London residents and vehicles registered with TfL.

TfL's director of strategy, Christina Calderato, said: "These measures will manage traffic demand as well as the environmental impacts, and ensure the new tunnel delivers on its objectives of reducing congestion and providing resilience at the Blackwall Tunnel while ensuring we support local residents on low income, small businesses, sole traders and local charities.

"If we did not introduce these, there would likely be high levels of traffic and congestion, which would lead to detrimental air quality impacts, as well as longer journey times.

[Book Novotel Hotel](#)

<https://www.youtube.com/watch?v=RR8YYeb4PMk>

•

# Banzai Japan Social Media



Fumi Fujisaki

Idol



Riko Ueno

Idol



Rino Ibusuki

Idol

-



Yunagi Nino

Idol



Shiori Fujisaki

Idol



Kana Ichinose

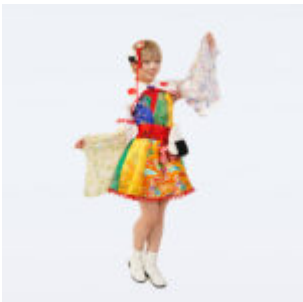
Idol

-



## Hoshino Arice

Idol



## Sasa Sasagawa

Idol



## Kosaka Yuu

Idol

-



Tsukumo Aira

Idol



Maika Ando

Idol



Yuuki Mochimaru

Idol

- 

Category

1. Lifestyle
2. Politics
3. Transport
4. Travel
5. News

**Date Created**

March 19, 2025

**Author**

admin

default watermark